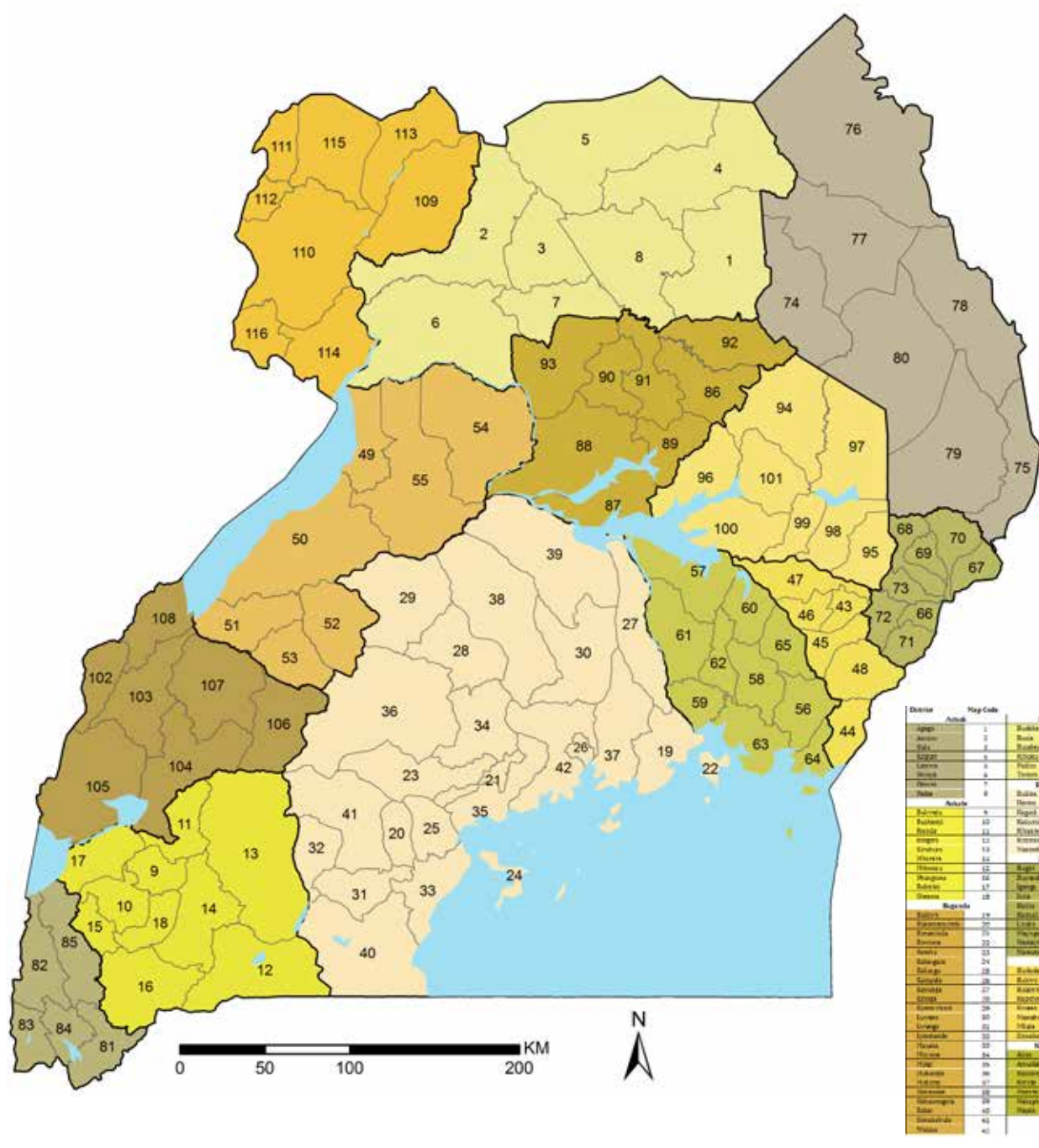


Uganda epidemiology and control profile

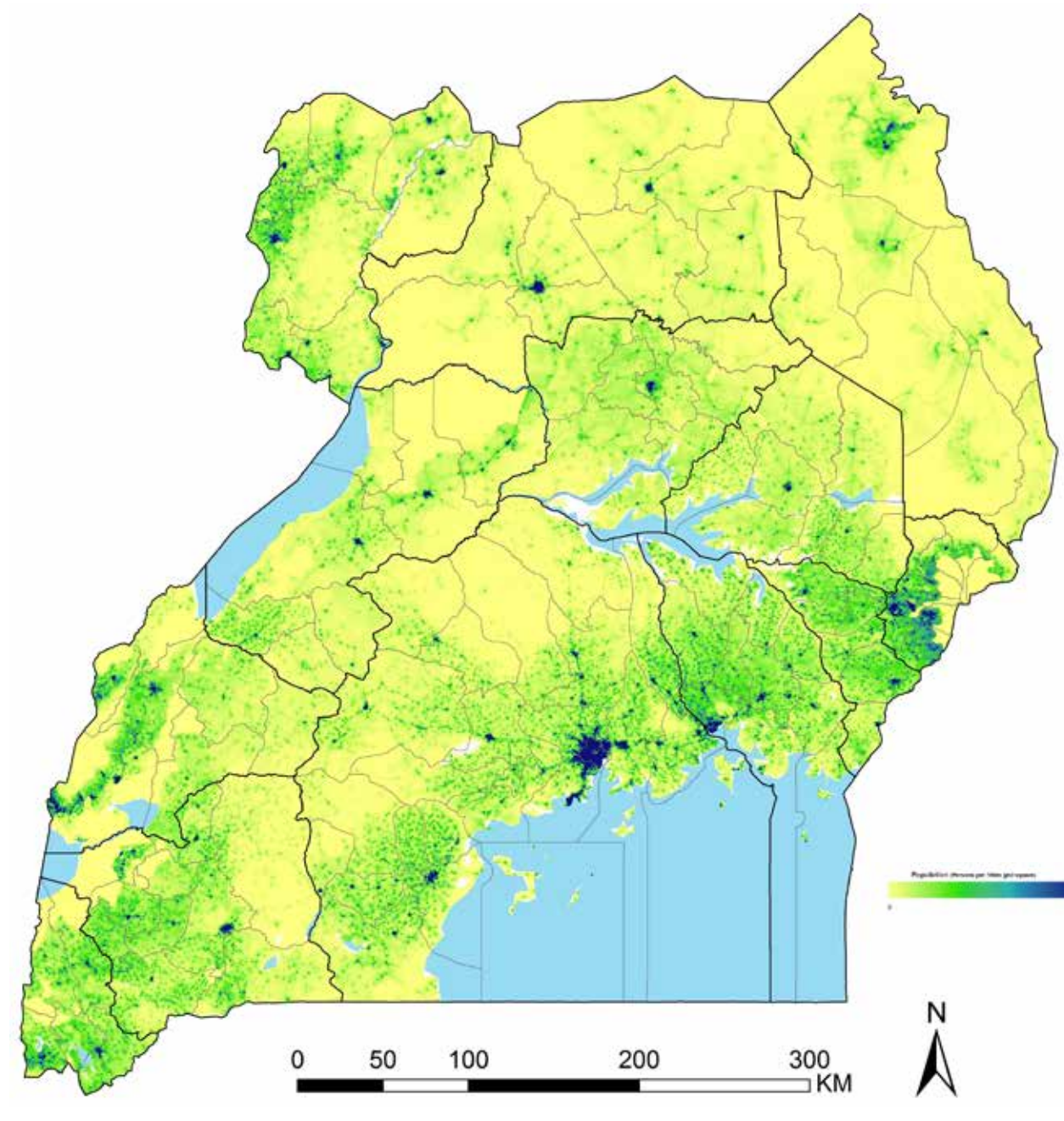
The LINK programme is a partnership between the London School of Hygiene & Tropical Medicine, KEMRI Wellcome Trust Research Programme, WHO Regional Office for Africa and National Malaria Control Programme to assemble the epidemiological evidence base to support a targeted approach to malaria control in Uganda.

Context

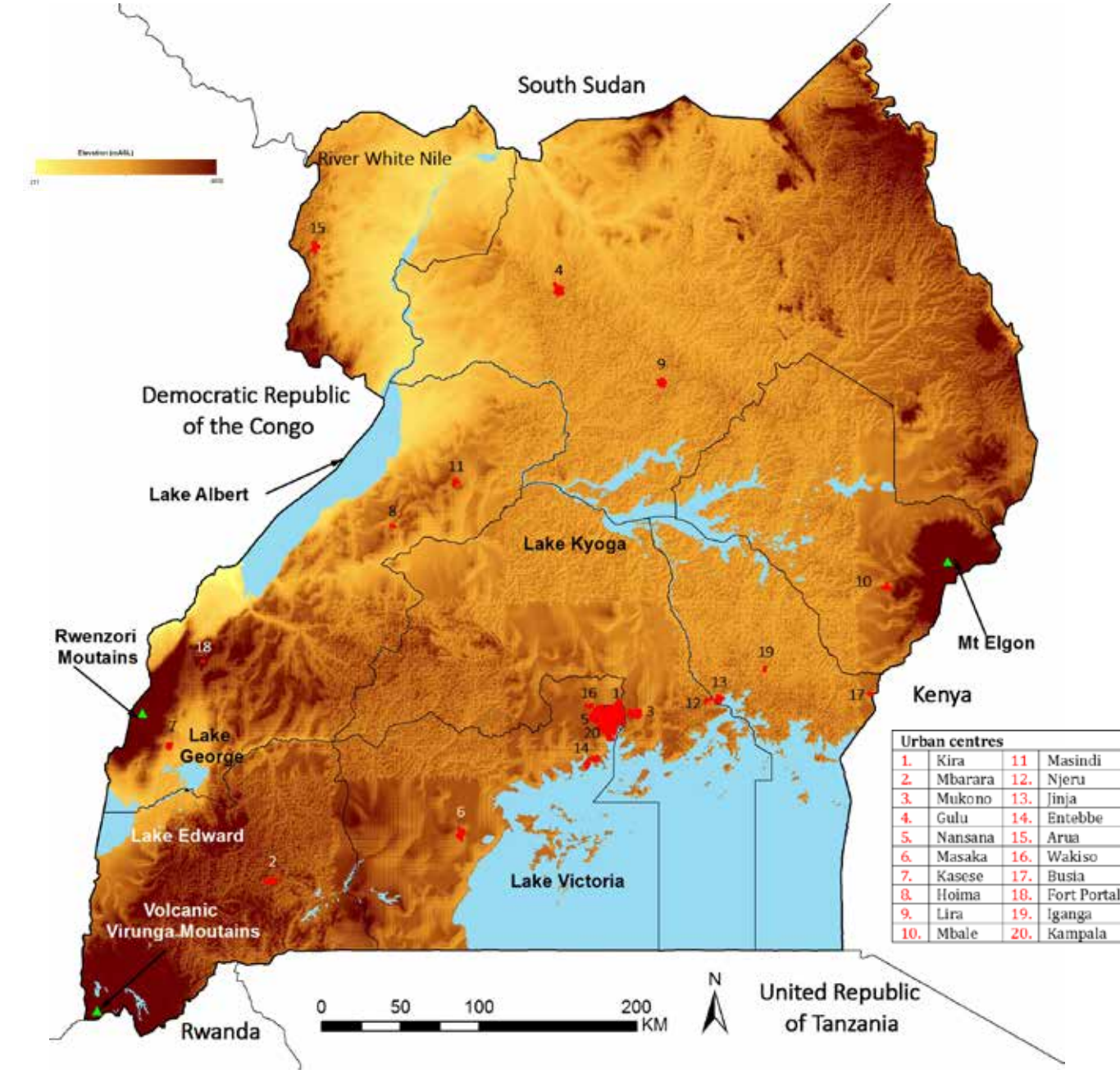
Health districts



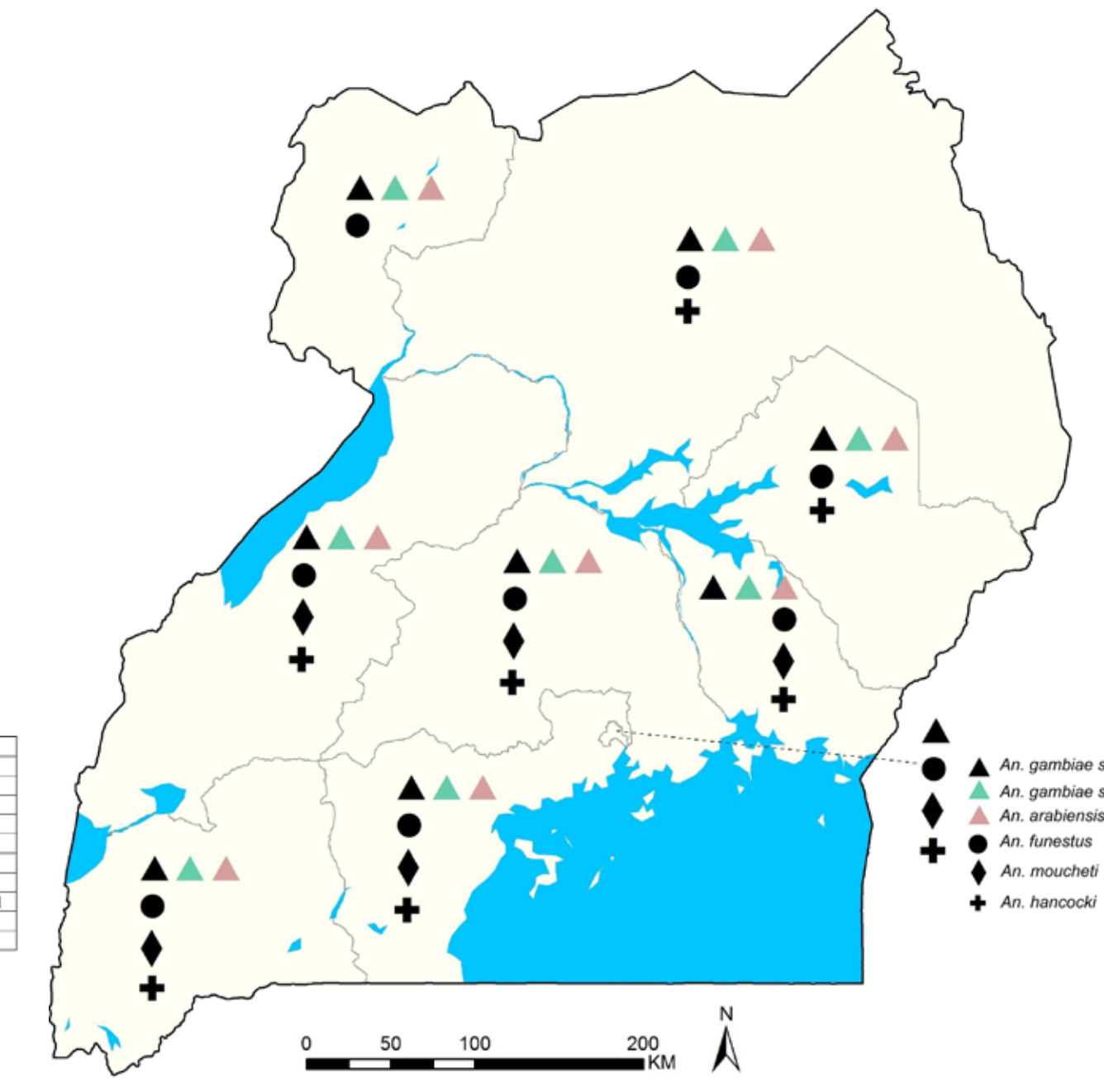
Population density and distribution



Major cities, elevations and rivers

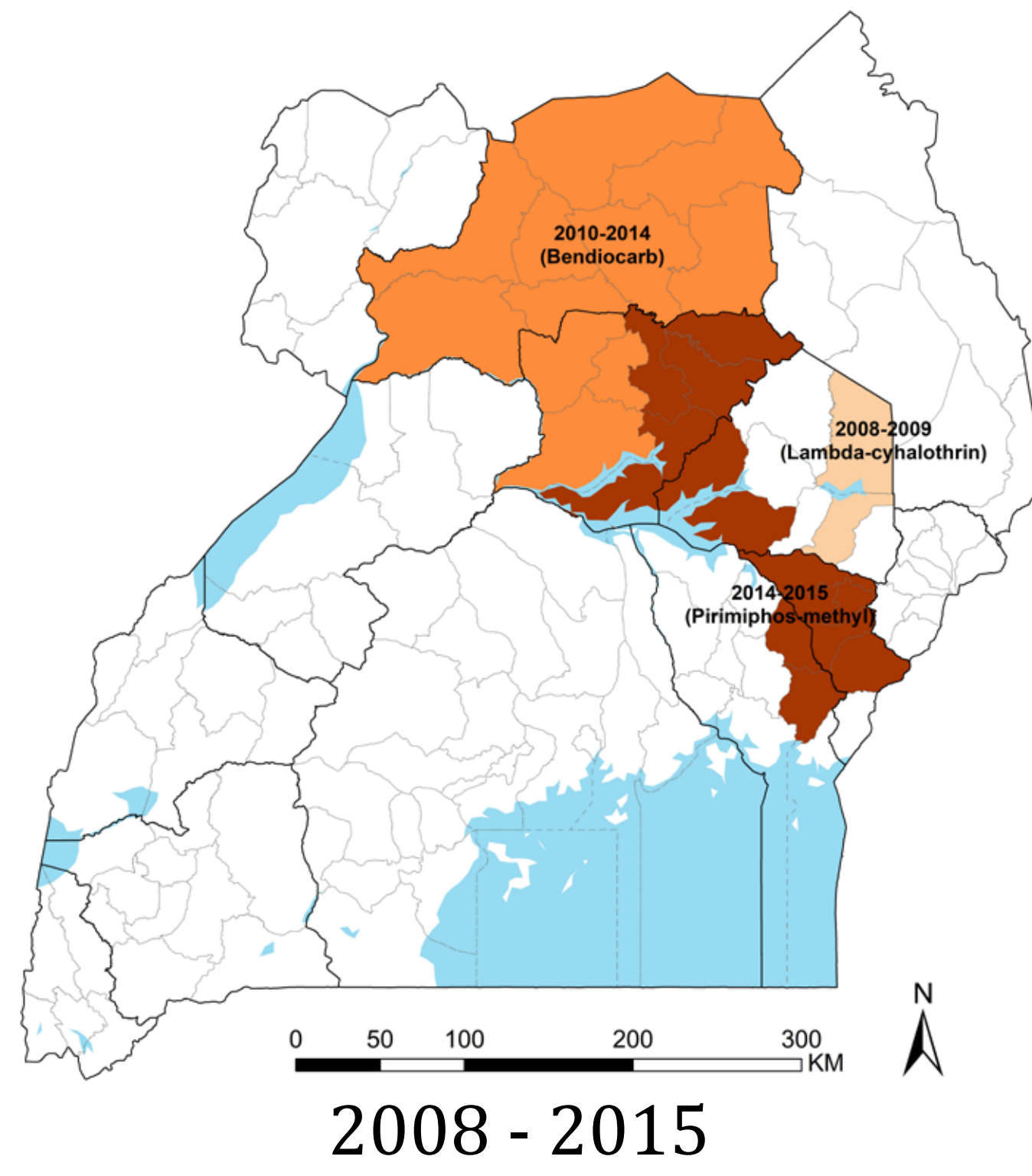


Identified mosquito species by district

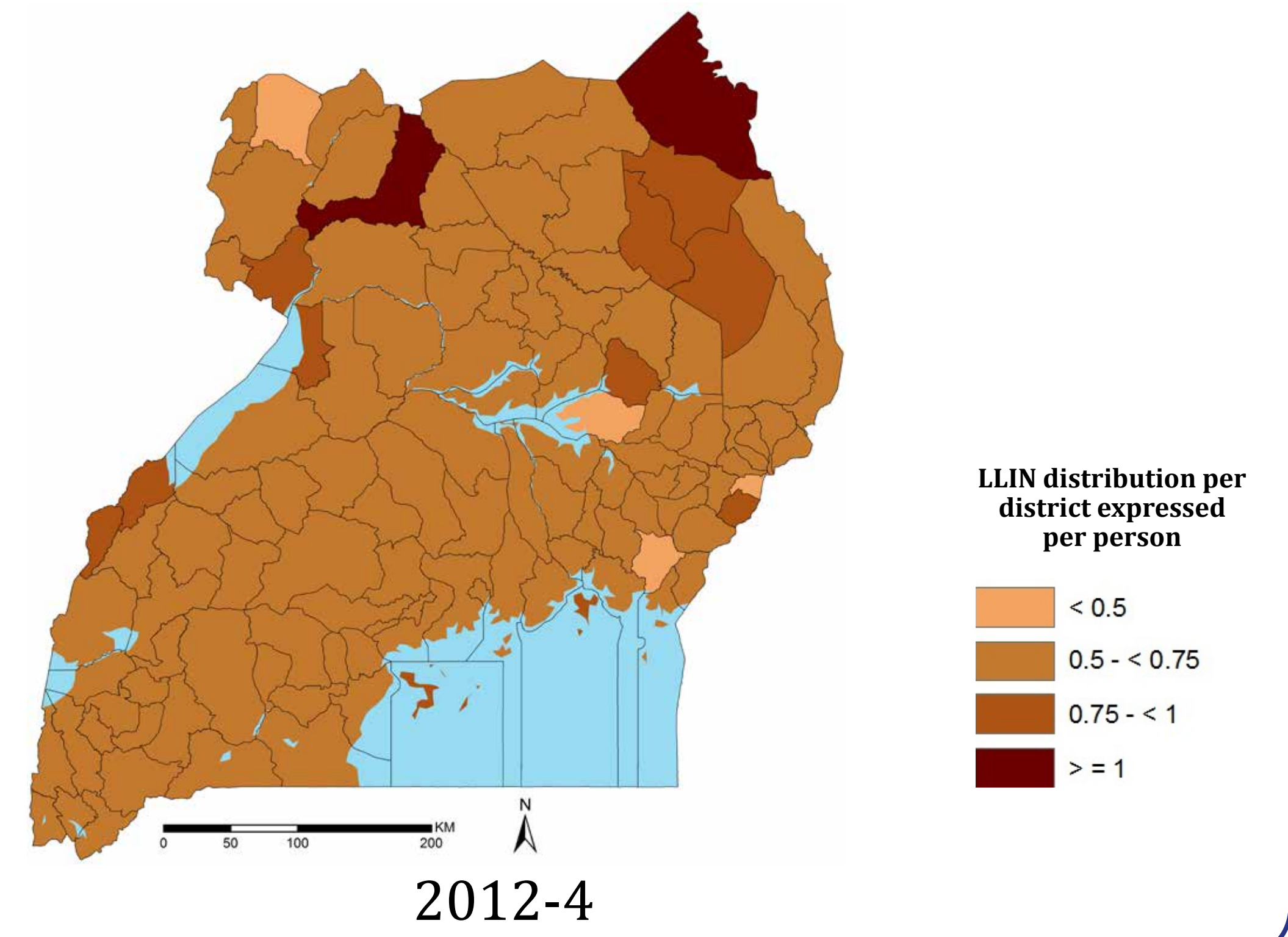


Inputs

Indoor residual spraying

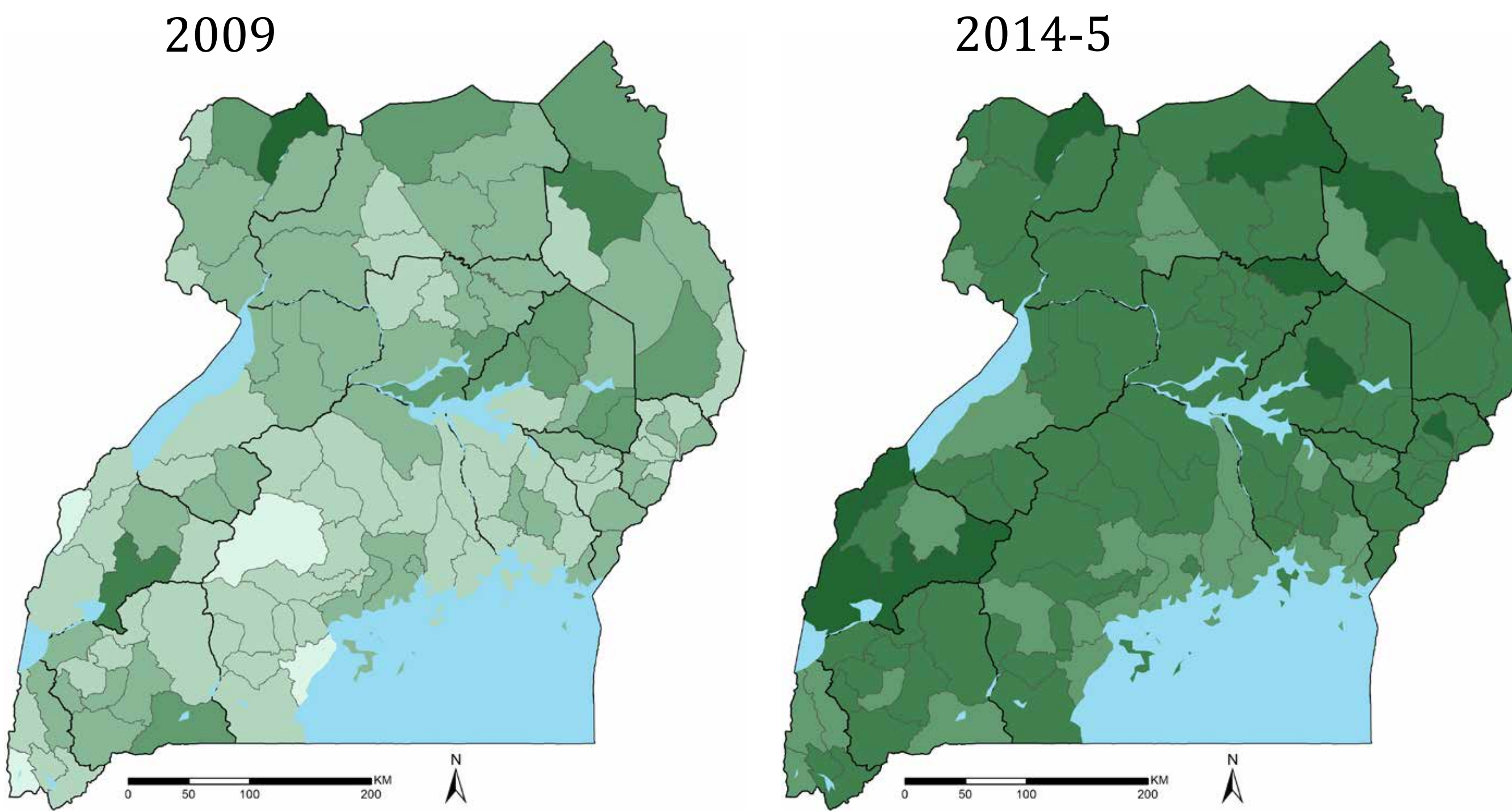


Long Lasting Insecticidal Net (LLIN) distribution per capita

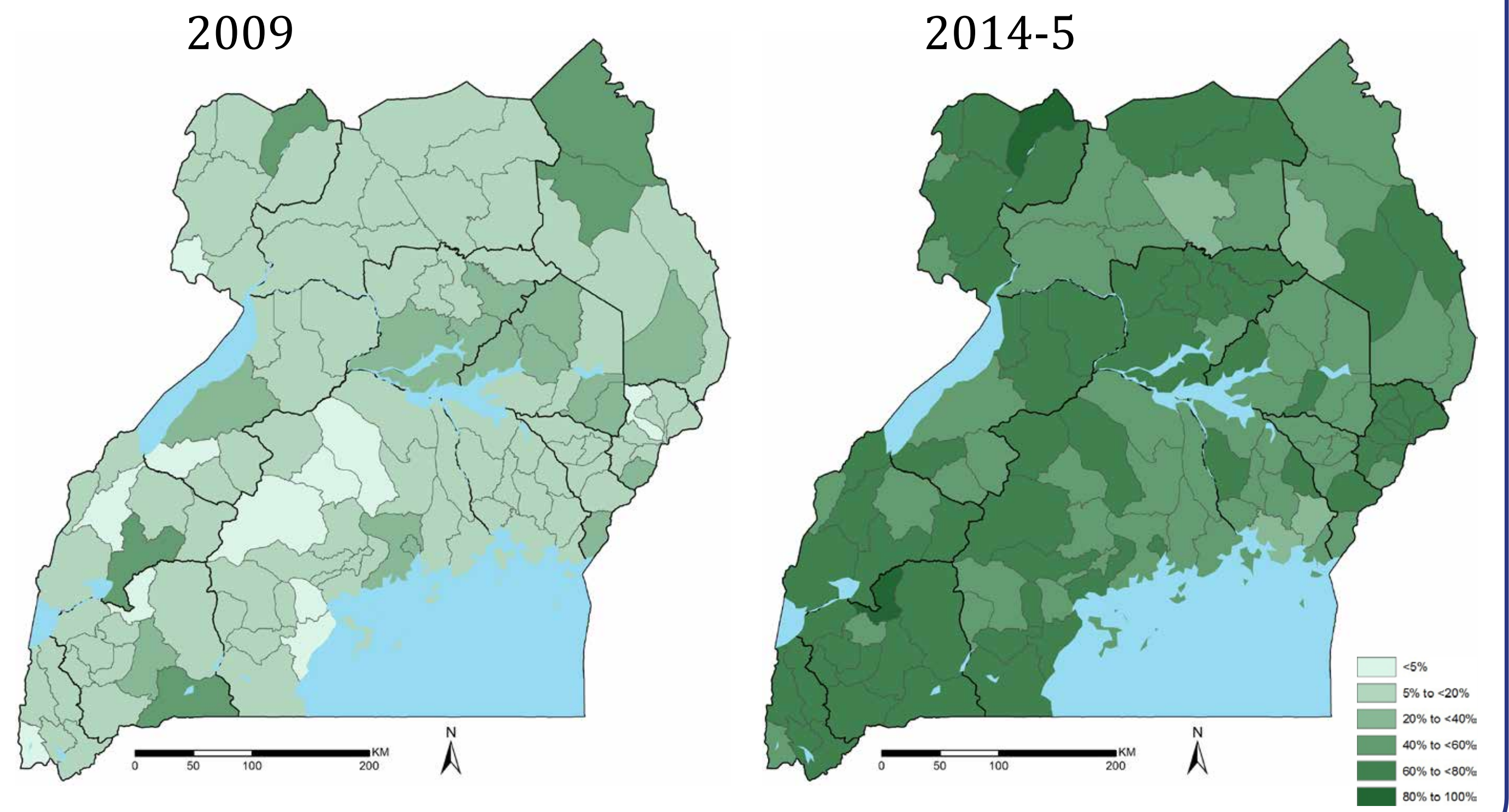


Outputs

Percent of population under insecticide treated nets (ITNs)

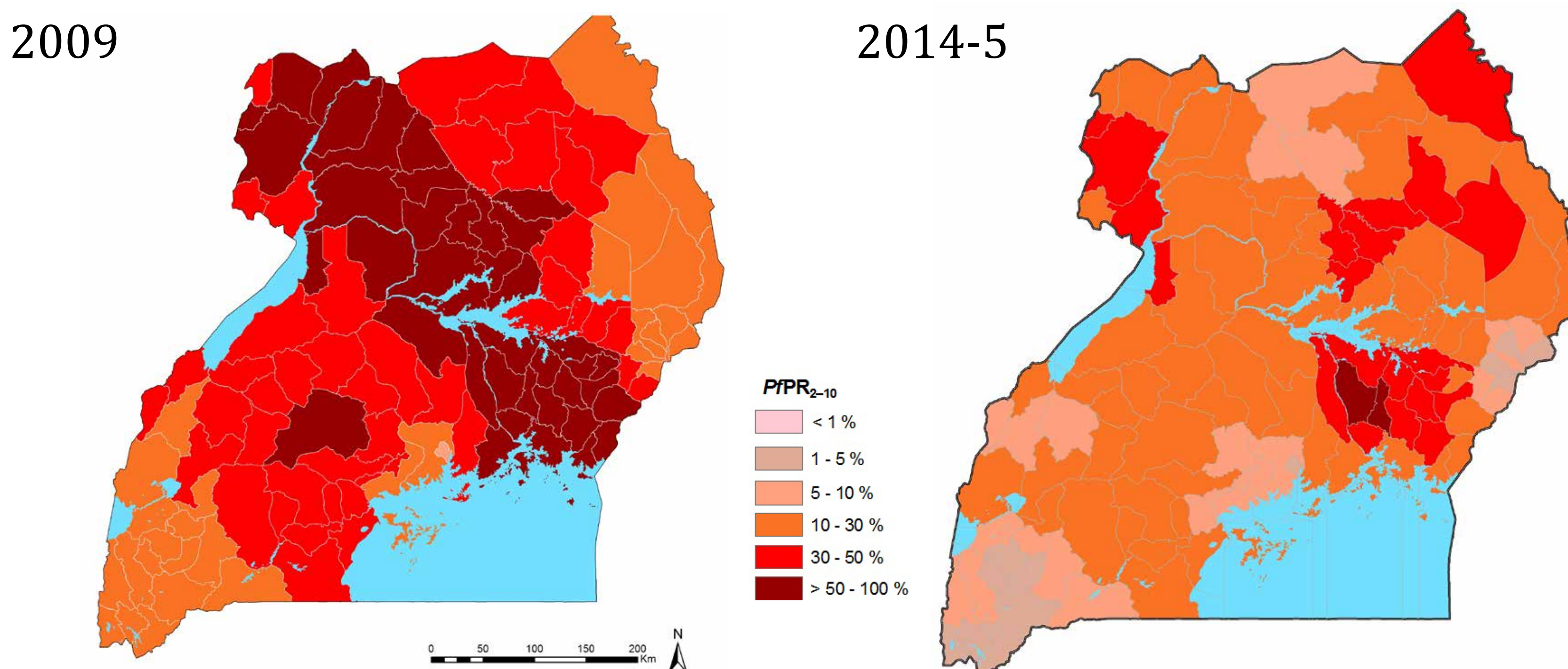


Proportion of households with at least 1 ITN for every 2 persons



Impact

Malaria risk: Interpolated prediction of *Plasmodium falciparum* prevalence (PPR_{2-10})



District level prevalence change between 2009 and 2014-5

