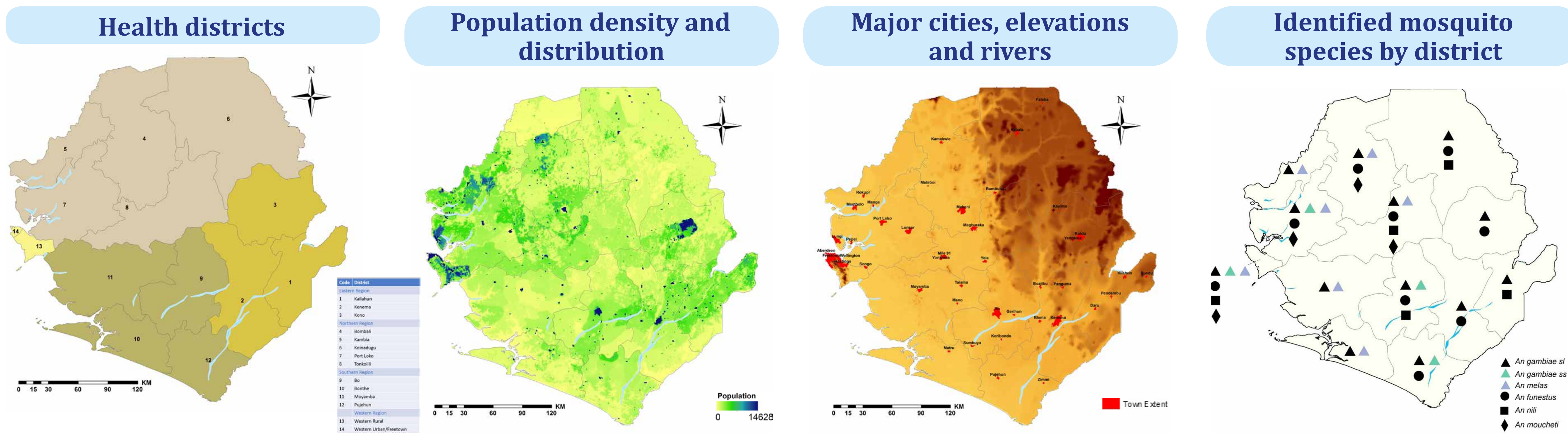


Sierra Leone epidemiology and control profile

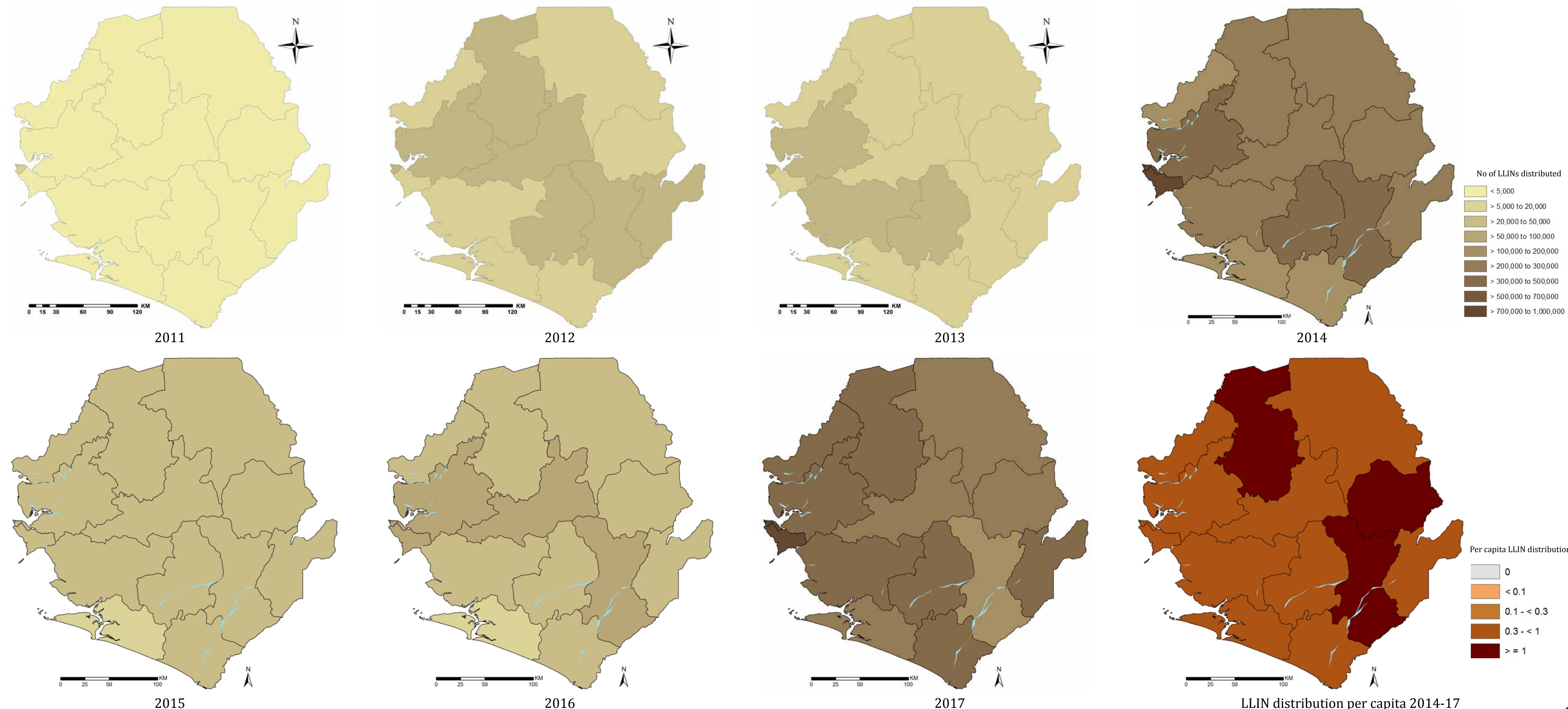
The LINK programme is a partnership between the London School of Hygiene & Tropical Medicine, KEMRI Wellcome Trust Research Programme, WHO Regional Office for Africa and National Malaria Control Programme to assemble the epidemiological evidence base to support a targeted approach to malaria control in Sierra Leone.

Context



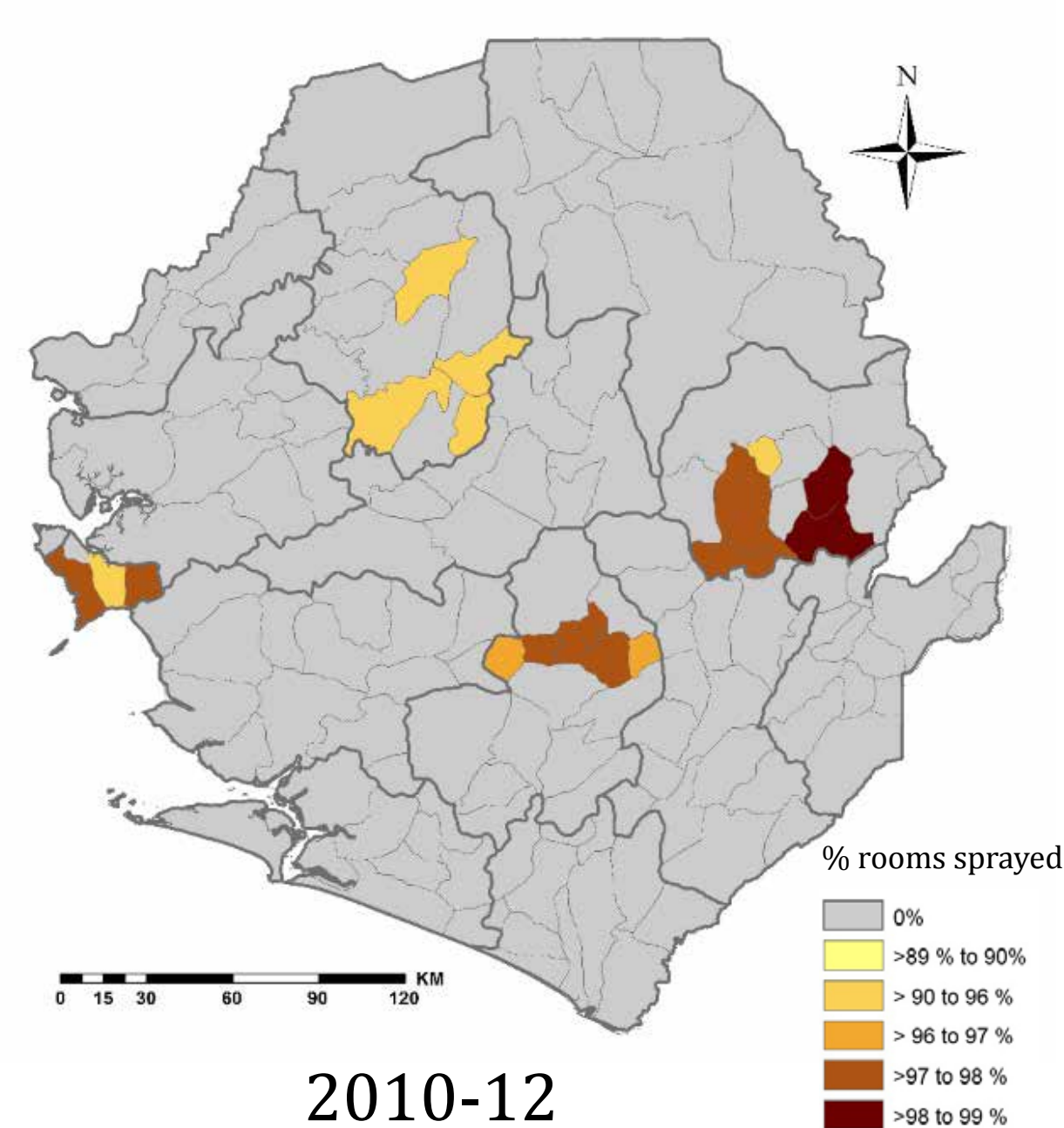
Inputs

Number of Long Lasting Insecticidal Nets (LLINs) distributed to households through mass distribution campaigns and routine programmes

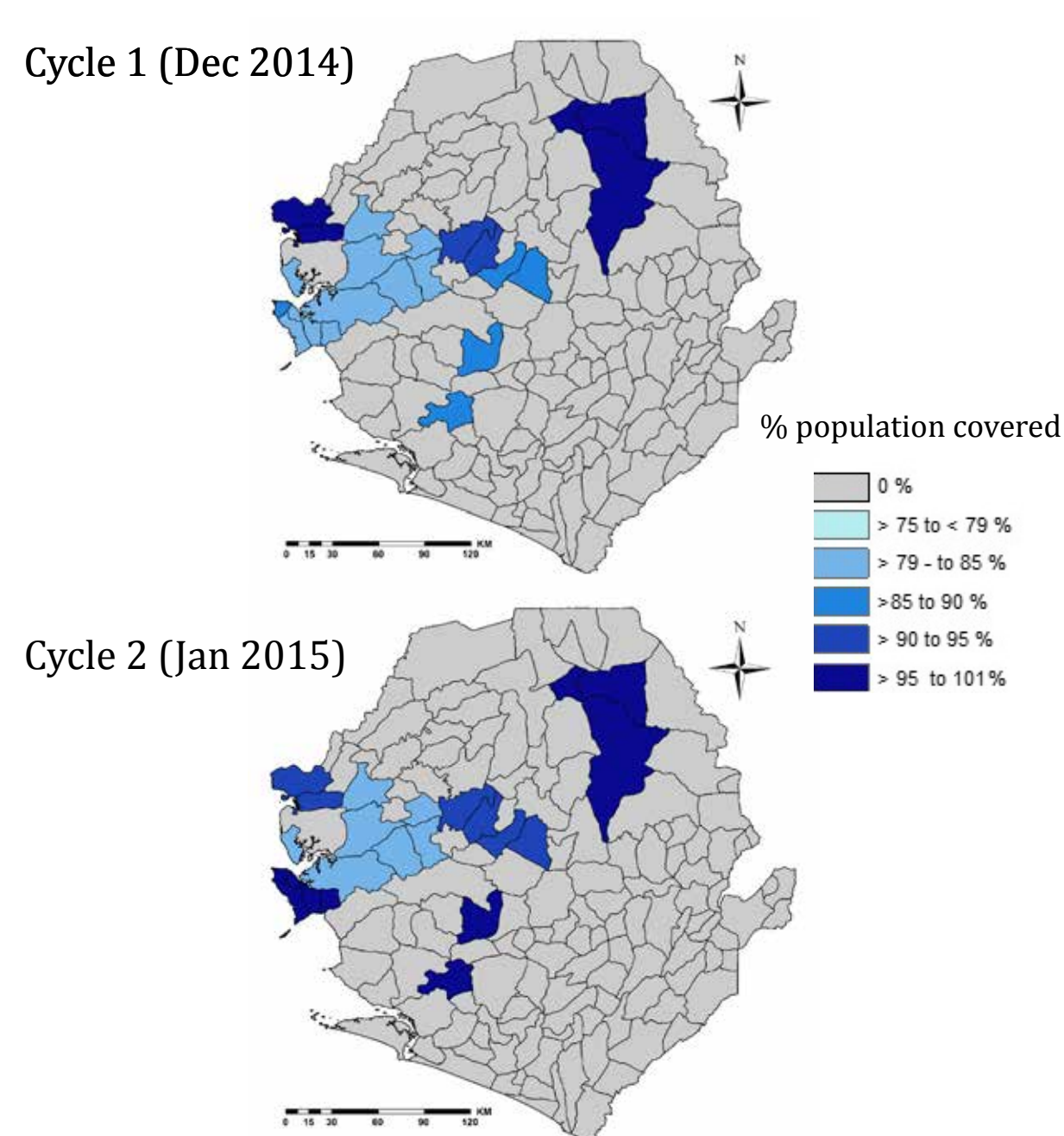


Inputs

Indoor residual spraying coverage chiefdoms

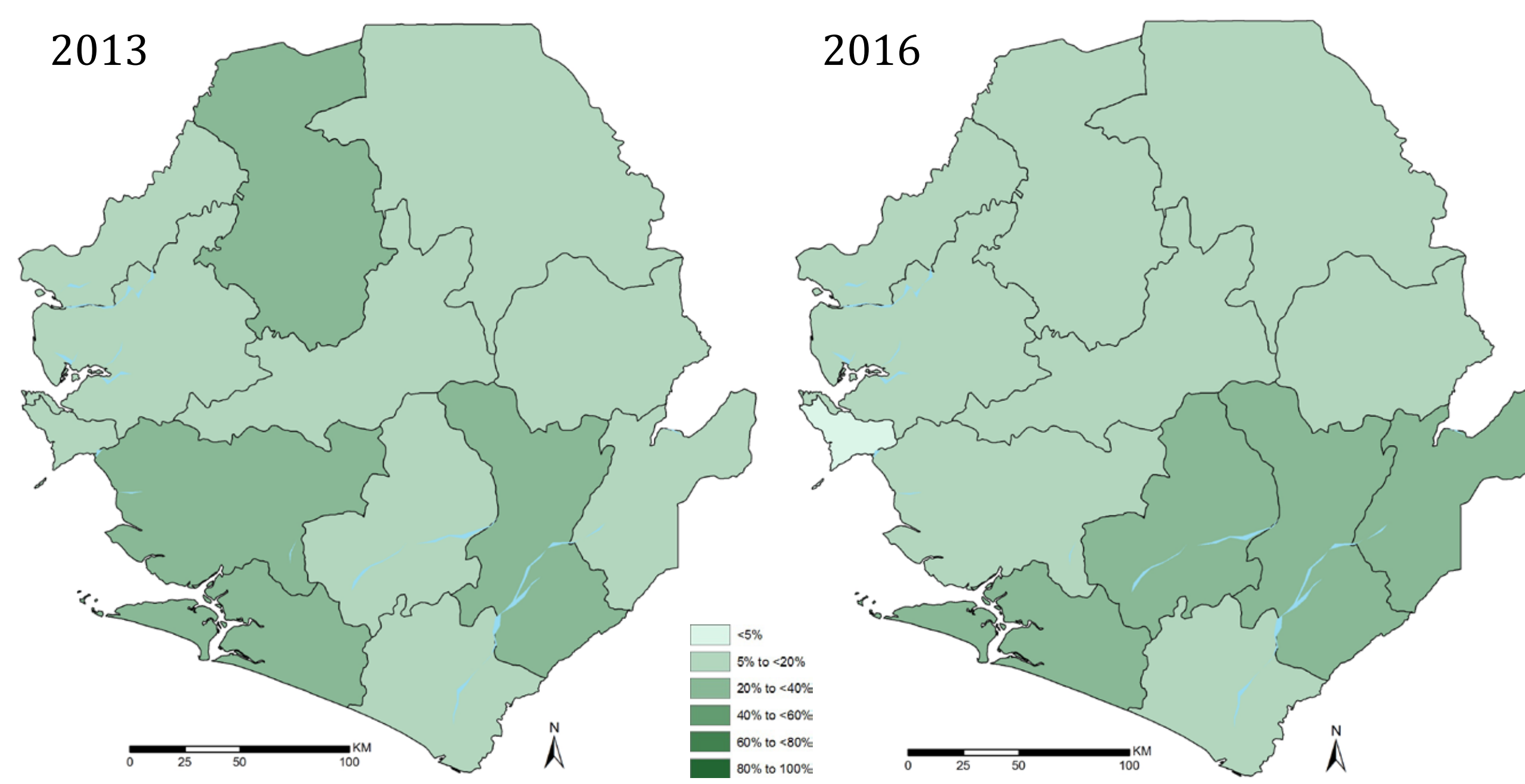


Mass drug administration



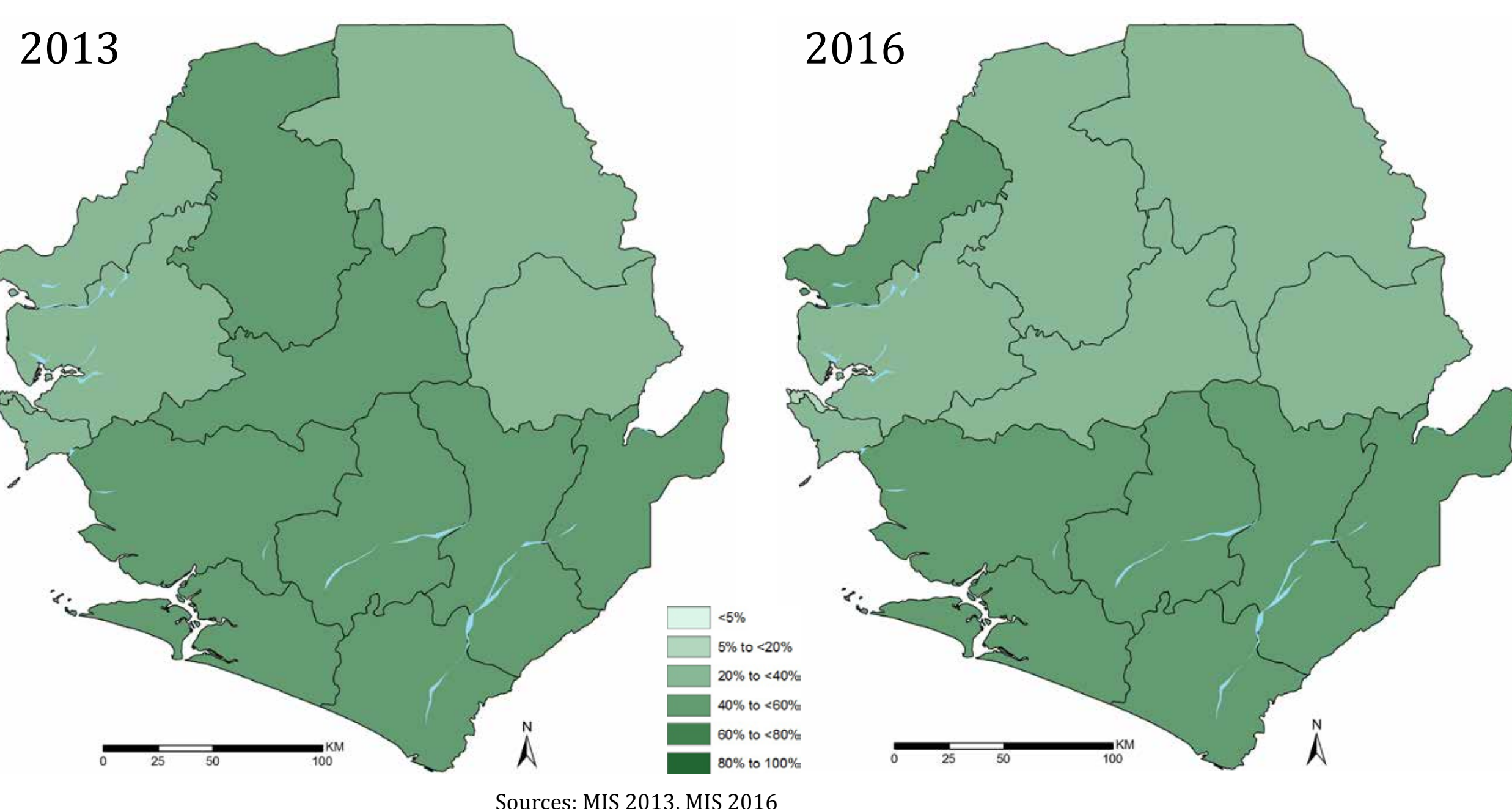
Output

Proportion of households with 1 ITN for every 2 persons or less



Outcome

Proportion of population (all ages) sleeping under an ITN



Impact

Malaria risk: Interpolated prediction of *P. falciparum* prevalence (PfPR₂₋₁₀)

