

Malaria control: Senegal

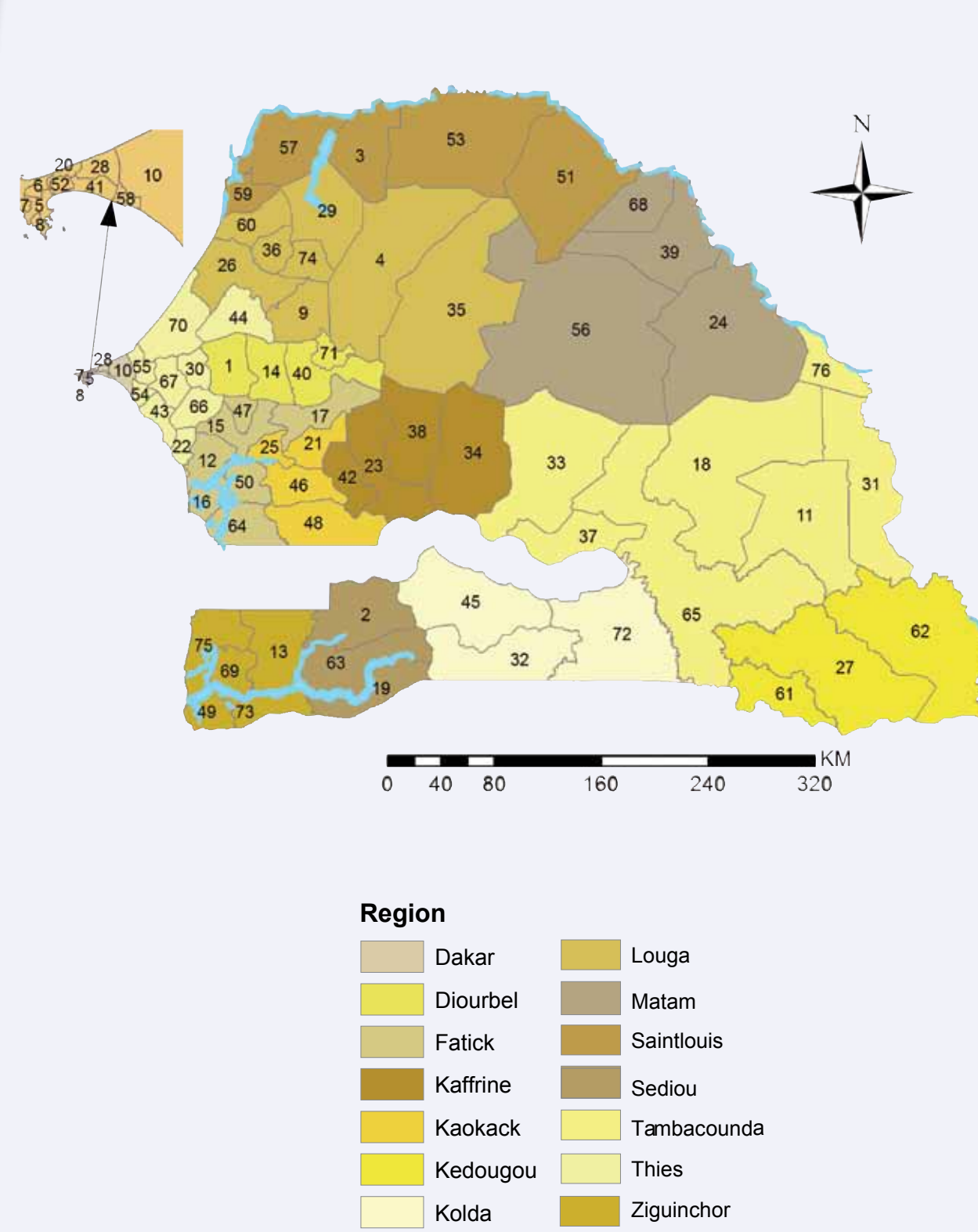
CONTEXT

We present a summary of progress with malaria control in Senegal between 2008 and 2014. Using available data from a range of sources*, model-based geostatistics were used to predict the coverage of insecticide treated mosquito nets and the risk of malaria in each district. The pie charts represent the proportion of the total population living at different levels of malaria risk. The bottom panel presents the malaria test positivity rate in health facilities, the absolute number of reported malaria cases and the estimated incidence of malaria in 2014.



* Household surveys, national census, mosquito net distributions and others.

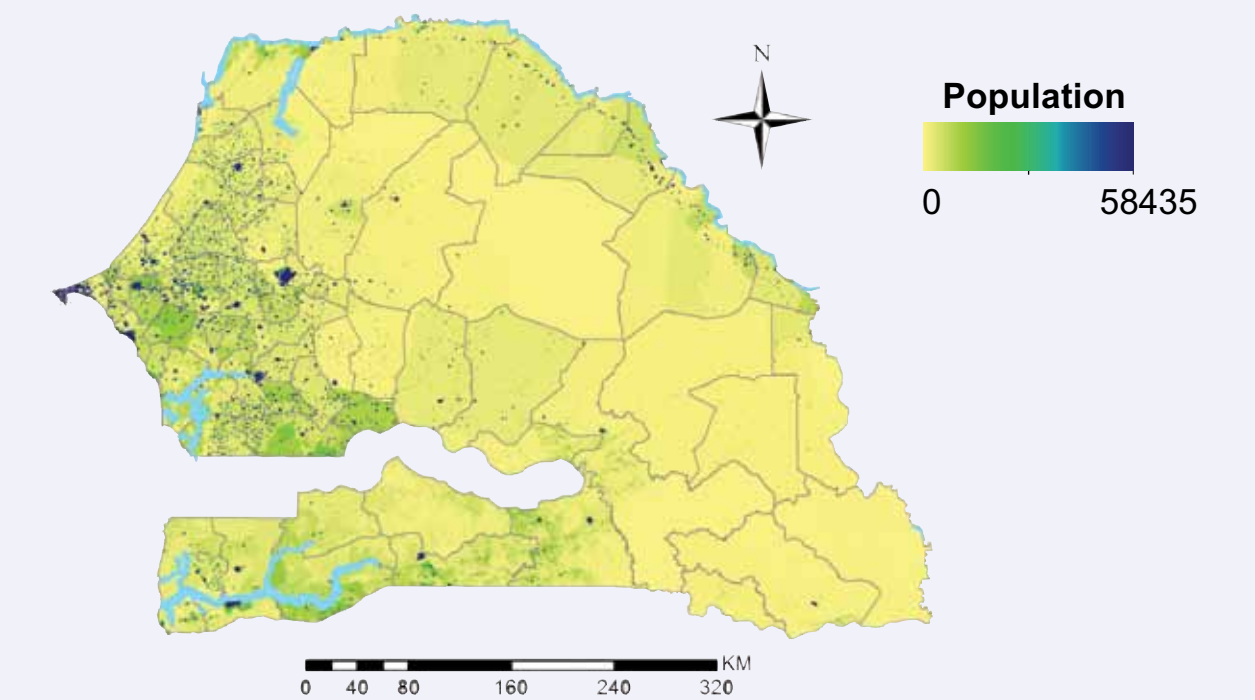
Health districts



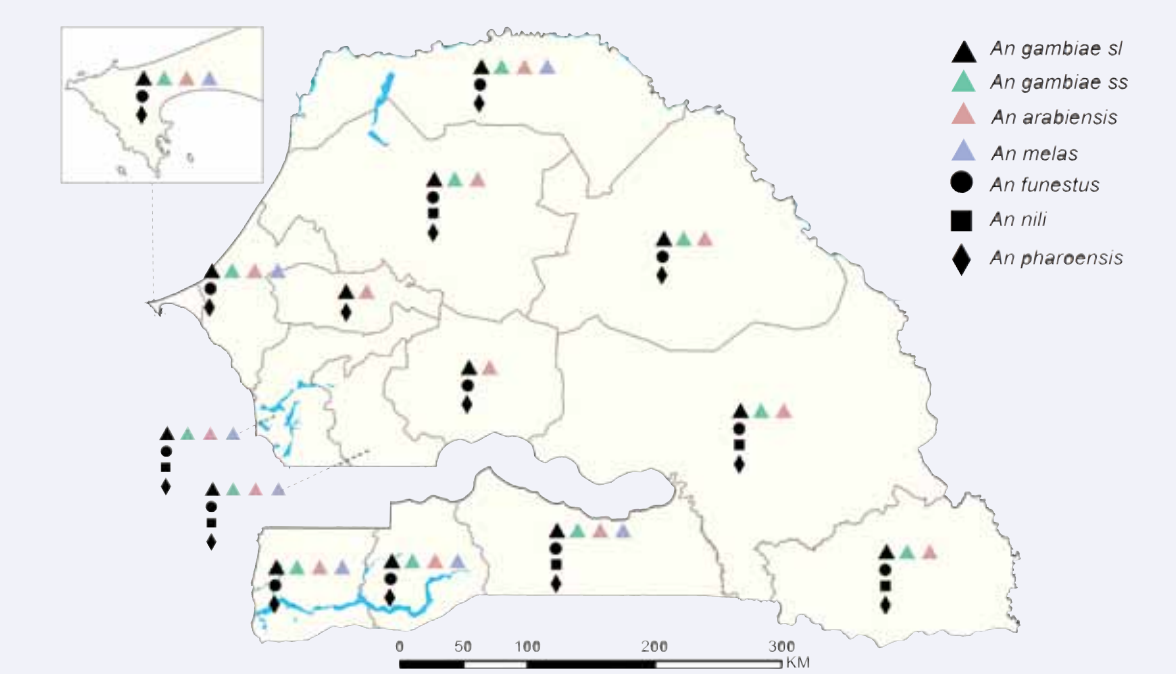
District map codes

Map code	District	Map code	District	Map code	District
5	Dakar Region	23	Kaffrine Region	24	Matam Region
6	Dakar Centre	34	Koungheul	39	Matam
7	Dakar Nord	38	Malem Hoddar	56	Renouou
8	Dakar Ouest	42	Mbirkilane	68	Thilogne
10	Diourbel	46	Ndoffane	68	Thilogne
20	Diourbel	48	Niarc	57	Richard Tall
28	Keur Massar	52	Filine	59	Saint-Louis
41	Mbao	58	Rufisque	19	Sédhiou Region
42	Mbissane	27	Kedougou Region	2	Boukling
44	Mbissane	61	Salemat	19	Goudomp
45	Mbissane	62	Saraya	63	Sédhiou
46	Mbissane	71	Tooba	76	Bakel
47	Mbissane	72	Diuffor	11	Diankha Makhani
48	Mbissane	74	Coki	31	Kidira
49	Mbissane	75	Medina Yara Foulah	33	Kaumpentum
50	Mbissane	76	Velingu	37	Makacolibantang
51	Mbissane	77	Louga Region	65	Tamba
52	Mbissane	78	Dahara		
53	Mbissane	79	Darou-Mousty		
54	Mbissane	80	Keur Massar Sar		
55	Mbissane	81	Linguere		
56	Mbissane	82	Joal		
57	Mbissane	83	Khombole		
58	Mbissane	84	Mbour		
59	Mbissane	85	Mekhe		
60	Mbissane	86	Poppenguine		
61	Mbissane	87	Paol		
62	Mbissane	88	Thiadiaye		
63	Mbissane	89	Thiessessyl		
64	Mbissane	90	Thiessessyl		
65	Mbissane	91	Ziguinchor		
66	Mbissane	92	Ziguinchor		
67	Mbissane	93	Ziguinchor		
68	Mbissane	94	Ziguinchor		
69	Mbissane	95	Ziguinchor		
70	Mbissane	96	Ziguinchor		

Population density and distribution

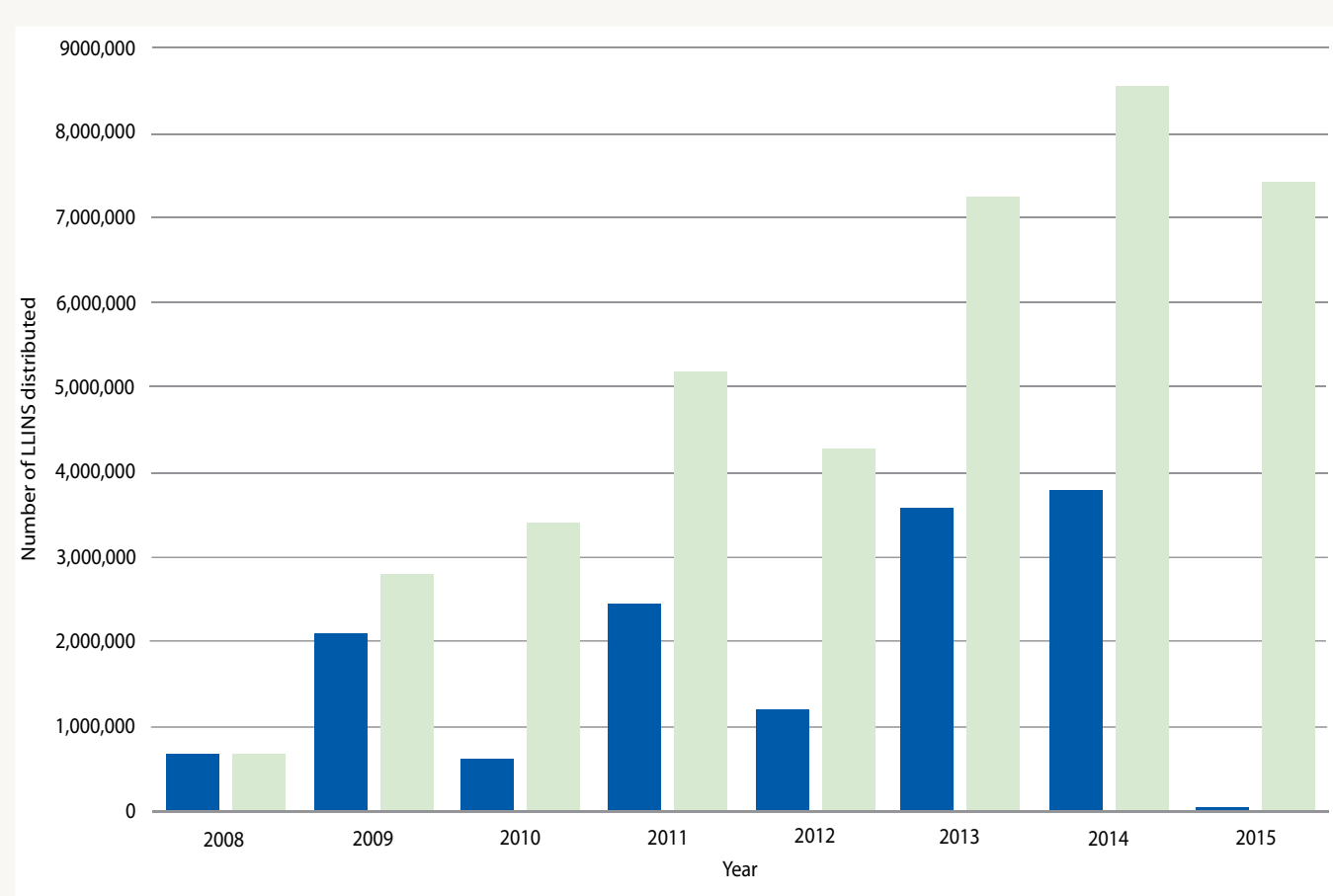


Identified mosquito species by region

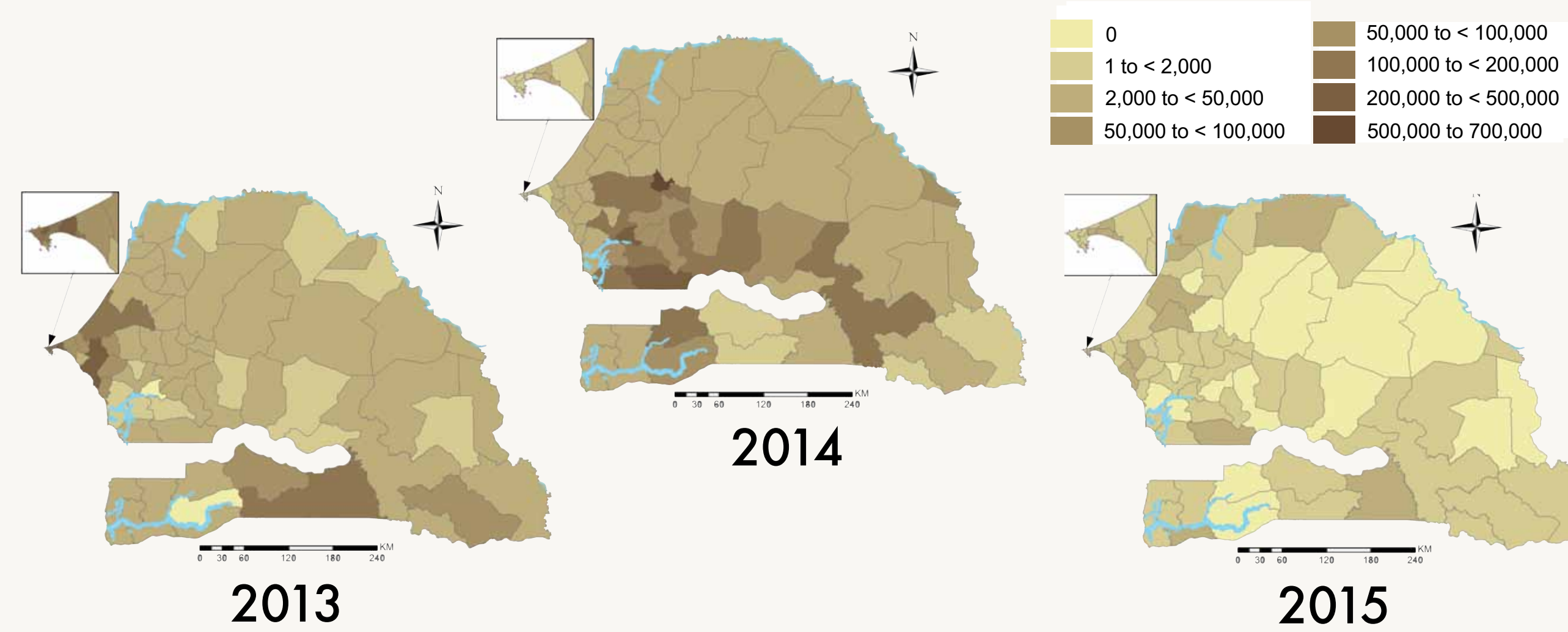


INPUT

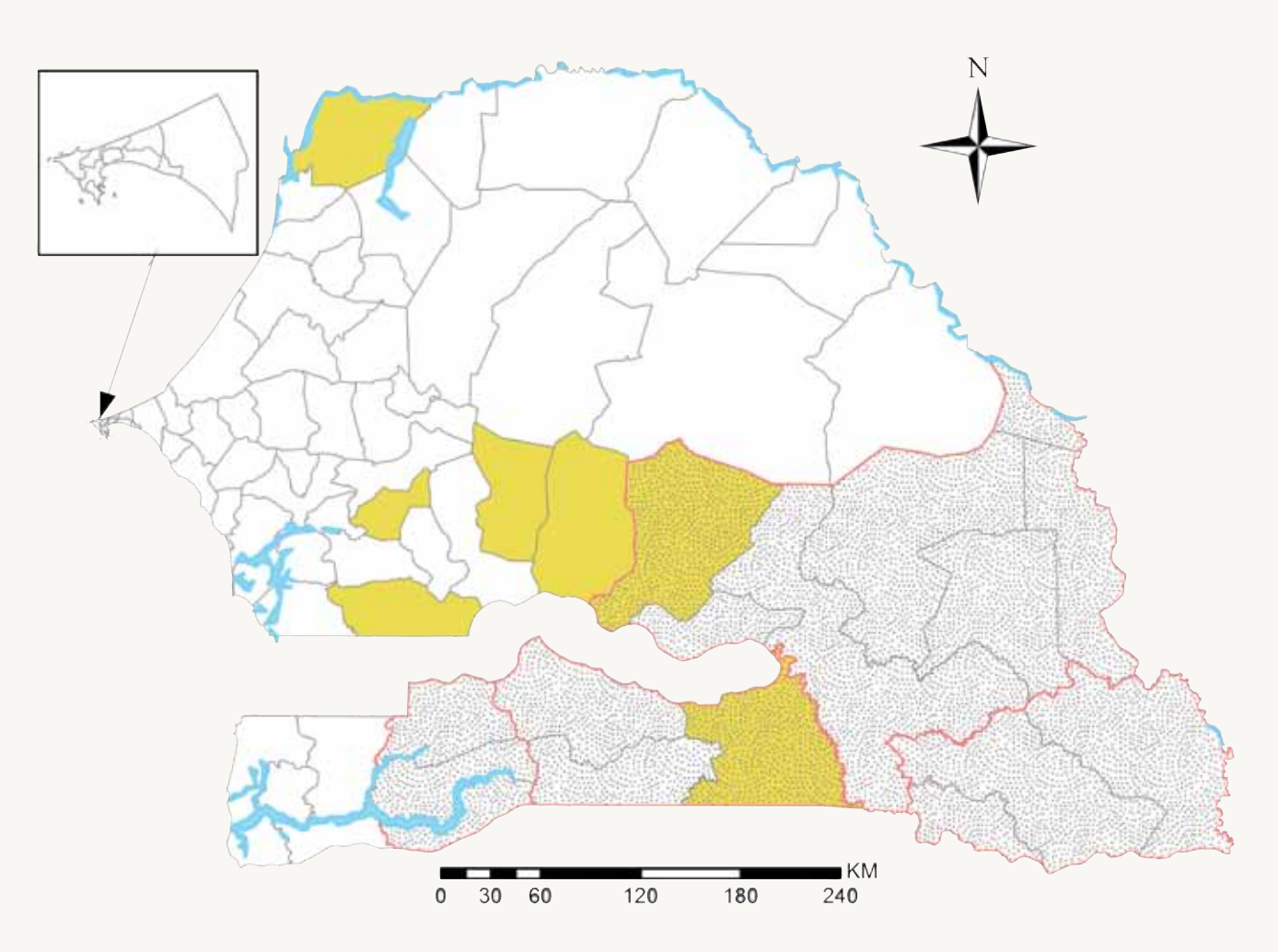
National annual (blue) and cumulative effective (green) ITN/LLINs



Number of LLINs distributed to households through mass distribution campaigns and routine programs

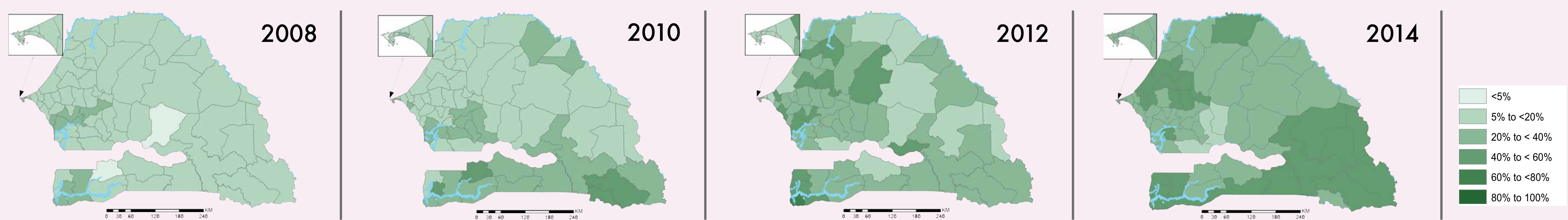


Districts targeted for IRS since 2008 (yellow) and for SMC (stippled)



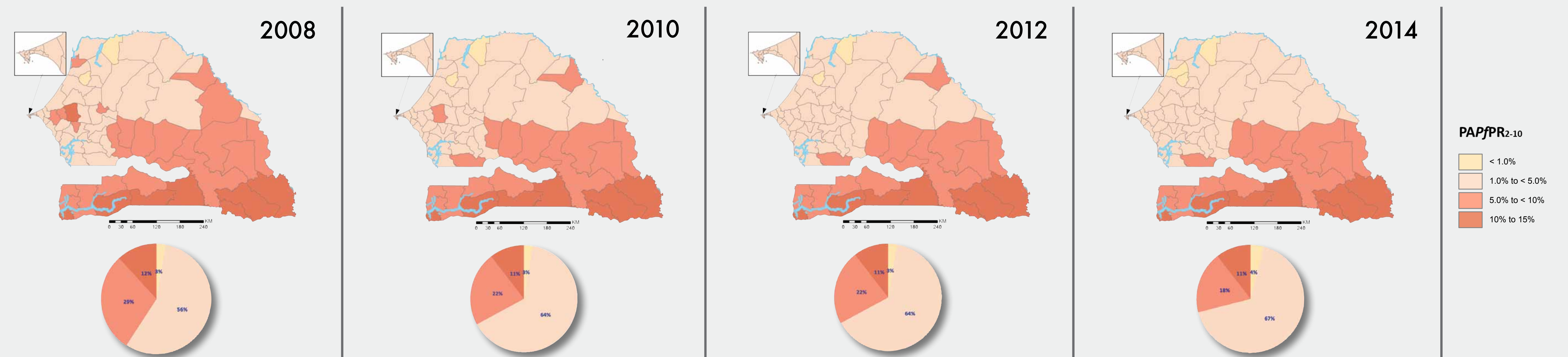
OUTPUT

Utilisation of Insecticide Treated Nets (ITN)



IMPACT

Malaria risk: Population adjusted Plasmodium falciparum prevalence in 2 - 10 year olds (PAPfPR2-10)



Malaria cases, case incidence and test positivity rate in 2014

